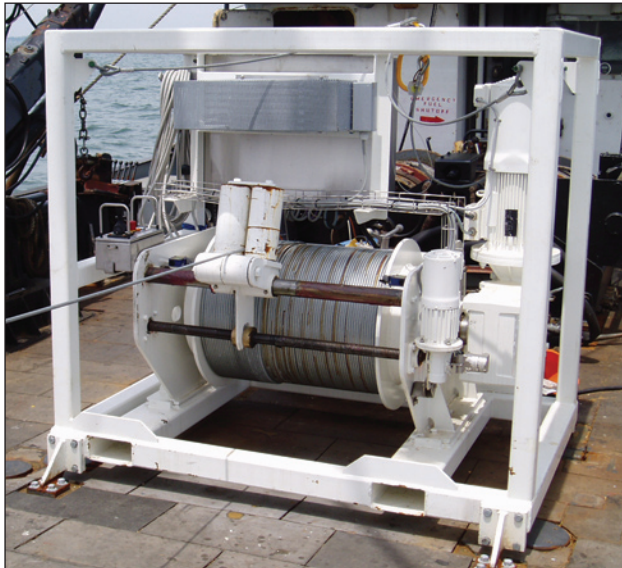


# MASH 1000/10-11 kN



## Description

The MASH 1000/10-11 kN oceanographic winch is designed for 1000 m 10 mm diameter cable. It is used extensively in connection with side scan sonars, ROV/ROTV systems and towed oceanographic systems.

Features includes an incorporated protection frame, direct drive level wind, variable speed, fail safe brake, built in motor controller and IP56 protection of electrical parts.

All units are prepared for Focal slip rings and have fork lift slots and pad eyes for lifting.

## Features and Benefits

- Local control placed on the winch
- Level wind with mechanical interface to the drum
- Prepared for mounting of a Focal electrical/fibre optical slip ring
- Built on electric power unit
- Long proven track record

## Applications

- Side scan sonars
- ROTV systems
- Mid water ROV systems
- Oceanographic sensor packages
- Wellhead TV systems

## System options

- Certification of lifting points according to International Labour Organisation (ILO 152) for lifting from quay to ship
- Certification of lifting points according to DnV (2.7.1) rules for offshore lifts
- Full certification of the winch system according to DnV's "Rules for Certification of Lifting Appliance 1994" or equivalent
- Eexd zone II application
- Remote control for deck use or positioned in control container rack
- Manual fine adjustment of level wind
- Cooling of umbilical and hydraulic system for operation in hot areas
- Sacrificial sea-fastening brackets
- Cable status indicator showing deployment length and speed

These are just examples of the options available



12-06-2005811W