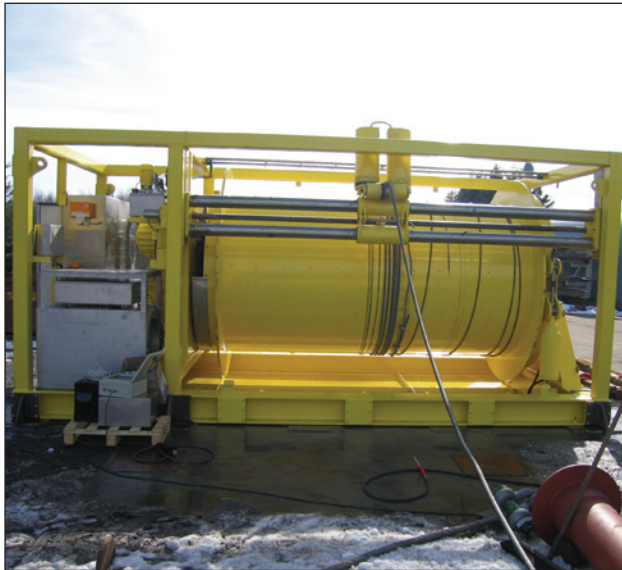


MASH Winch 1500/53-150



Description

The MASH 1500/53-150 ROV winch is designed for 1500 m of 53 mm diameter umbilical. It is used extensively in connection with trunkers and ROV systems.

Features includes an incorporated protection frame, direct drive level wind, variable speed, fail safe brake, built in motor controller and IP56 protection of electrical parts.

All units are prepared for Focal slip rings and have fork lift slots and pad eyes for lifting.

Features and benefits

- High speed
- Large size heavy duty trencher winch
- Large designed drum to increase speed, and to reduce numbers of cable layers
- Reduced cable layers prevents excessive thermal load of umbilical during operation

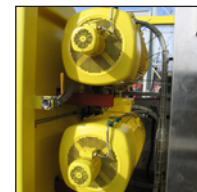
Applications

- Trencher systems or large size ROV's

System options

- Wireless remote
- Touch screen remote control station
- Customer designed machine interface
- Active heave compensation
- Constant tension without signal from load cell
- Control of winch by other customer signals i.e depth sensors etc.

These are just examples of the options available



12-06-2004788W