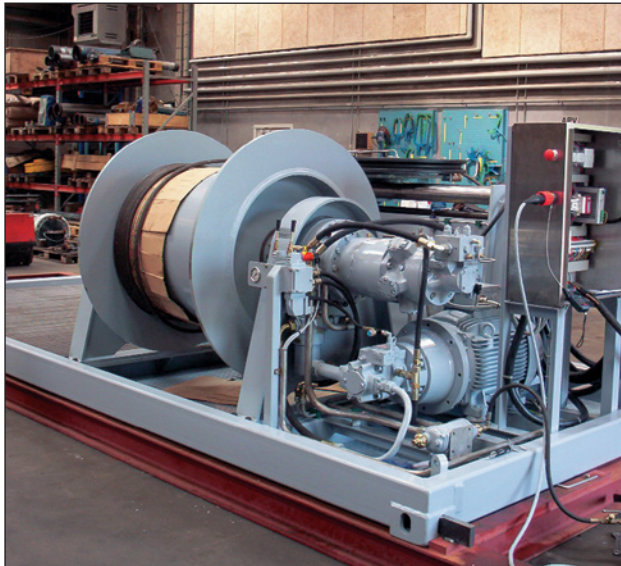


# MASH SH 25 kN 20' Frame



## Description

This Cormac SH 25 kN winch is built onto a 20' frame for the transportation of both the winch and auxiliary systems.

One of the major advantages of this system is the ability to place, for example, an ROV or ROTV on the frame for transportation to and from ship or platform – saving the time-consuming task of dismantling and remounting equipment from and onto the cable and winch.

This winch unit is designed to integrate with our LARS and wave compensation systems.

## Features and benefits

- 20' frame for placement of auxiliary equipment
- Local control placed on the winch
- Direct driven level wind with on-site position adjustment
- Prepared for mounting of a Focal electrical/fibre optical slip ring
- Free access to all junction boxes
- Separate Hydraulic Power Unit included
- Hydraulic hoses standard length 5 m
- Long proven track record

## Applications

- All ROV or ROTV systems

## System options

- Certification of lifting points according to International Labour Organisation (ILO 152) for lifting from quay to ship or for lifting according to offshore regulations
- Full certification of the winch system according to DnV's "Rules for Certification of Lifting Appliance – 1994" or equivalent
- Exd zone II application
- Remote control for deck use or positioned in control container rack
- Hydraulic override function for adjustment of level wind during operation
- Cooling of umbilical and hydraulic system for operation in hot areas
- Sacrificial sea-fastening brackets
- Non interchangeable quick release couplings for hydraulic hoses
- Extra control valve for A-frame operation or other hydraulic equipment
- Cable status indicator showing deployment length and speed

These are just examples of the options available



12-06-2003760W