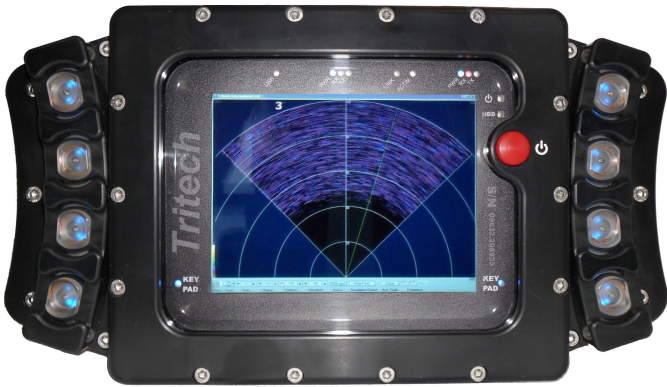


# P-Sea System

## Modular Underwater Diver Computer

### 200m depth rated diver computer

The P-Sea Underwater Computer System is fully waterproof for use at up to 200m depth. It incorporates the standard features of a desktop PC, with interfaces for a range of Trittech subsea sensors (e.g., sonars or modems) and other third party sensors (such as compasses).



The P-Sea offers unrivalled versatility for a vast number of diving operations and provides a flexible platform for underwater data collection, display and mission management.

Sensors and other external peripherals interface to the P-Sea console through two serial ports a single USB port and an Ethernet port. The serial ports may be configured for RS232 or RS485 communications and can provide an external power supply directly from the P-Sea battery source.

The P-Sea runs a Windows™ Embedded operating system, maintaining the familiar look and feel of the Windows™ desktop computer and is capable of running 3rd party Windows™ software to interface with 3rd party sensors, such as compasses. The P-Sea also has Trittech Seonet Pro pre-installed, which allows control of a wide range of Trittech sub-sea sensors. Visual display is in the form of a 17cm LCD display with adjustable backlight.

### Benefits

- Fully waterproof
- Sonar preset function
- Instant scan reversal for target tracking
- Covert mode operation
- Micron sonar mounting

### Features

- 200m depth rating
- Two RS232/RS485 ports
- 10/100Mb Ethernet port
- USB 2.0 port
- Multi-function backlit keypad
- Backlit 17cm LCD display

### Applications

- Civil, military and sport diving
- Mission control and data logging
- Survey and condition monitoring
- Vehicle and subsea system control

Document: 0633-SOM-00002, Issue: 01

# Specification

Computer	
Processor	1GHz (minimum)
RAM	512MB (minimum)
Storage	4GB IDE flash (minimum)
Display	17cm (6.5") LCD, 1024x768, adjustable backlight
Operating system	Windows XP™ Embedded
Software	Tritech P-Sea Seonet Pro and Tritech Gemini
Status LEDs	Input and external power status, communications, hard drive activity, keypad connectivity

Interfaces	
Power input	12 to 36V DC at 30W, Impulse IE55-1003-BCR connector
Serial ports	RS232, RS485, Impulse IE55-1206-BCR connector
USB port	USB2.0, providing 5V 500mA, Impulse IE55-1204-BCR connector
Ethernet	10/100Mb, Impulse IE55-1206-BCR connector

Physical	
Weight in air	6kg
Weight in water	2.2kg
Dimensions	336x182x96mm (width x depth x height)
Depth rating	200m
Buttons	Pressure compensated, non-latching, spring loaded
Materials	Rear heatsink: Anodised aluminium Side and front: Acetal Display window: Clear polycarbonate
Operating temperature	-10 to 35°C
Storage temperature	-20 to 50°C

Options	
Battery pack & charger	Output: 12V at 9Ah Type: NiMH Charge time: 4.5 hours Weight air: 2.9kg Weight water: 1.7kg
Sonar mount	Micron sonar mount USB cable (for data transfer)

Specifications subject to change according to a policy of continual development.

Document: 0633-SOM-00002, Issue: 01

Marketed by:

**Tritech International Ltd**  
Peregrine Road, Westhill Business Park  
Westhill, Aberdeenshire, AB32 6JL  
United Kingdom  
sales@tritech.co.uk  
+44(0)1224 744 111

