

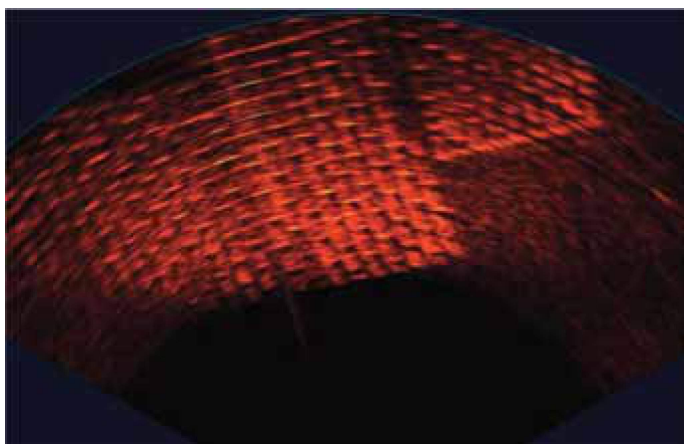
Gemini 720id

Multibeam Imaging Sonar

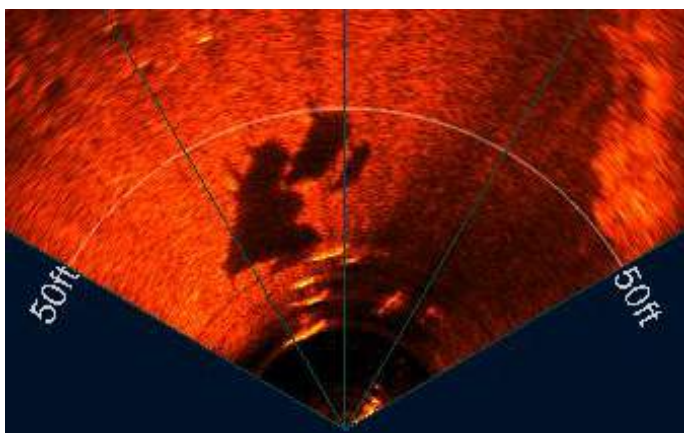


Ideal solution for real time target tracking and visualisation in deep water

The Gemini 720id is a deep-rated real time multibeam imaging sonar. Utilising an array of transducers, the 720id provides the operator with 120 degree constant field of vision of the underwater scene ahead. The Gemini 720id is part of Tritech's Gemini multibeam family. Network all your Tritech sensors together via Seagnet Pro Software, choose the Gemini Standalone Software for control and display or upgrade to Gemini SeaTec Software for target tracking and object detection..



Gemini sonar image of a pipeline mattress



Gemini sonar image of a school of dolphins (image courtesy of Centre of Marine Science and Technology, Curtin University).

Benefits

- Near field focussing
- 8mm range resolution
- Integrated velocimeter for accurate ranging
- 120m range for easy navigation
- Fast update rates for video-like imagery
- Integrated Ethernet and VDSL

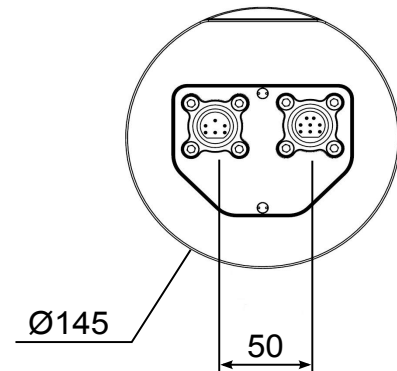
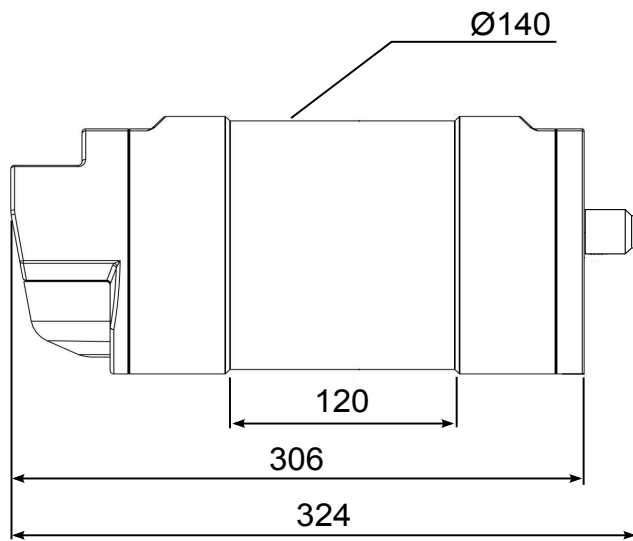
Features

- 4000m depth rating
- Real time imaging sonar
- Wide field of view
- Ethernet or VDSL communications
- Network all Tritech sensors in Seagnet Pro
- Gemini SeaTec software upgrade available
- Software Development Kit available

Applications

- ROV/AUV navigation
- Obstacle avoidance
- Sub-sea construction and engineering
- Search and salvage
- Sub-sea monitoring and inspection
- Mammal detection
- Object detection
- Target recognition and tracking

Specification



Not to scale, dimensions in mm.
Shown with Burton connector. Other connectors are available

Acoustic Specifications		
Operating Frequency	720kHz	
Angular Resolution	1.0° acoustic, 0.5° effective	
Transducer Angle	10° downward tilt	
Scanning Sector	120°	
Number of Beams	256	
Vertical Beamwidth	20°	
Range	0.5 to 120m	
Scan Rate	5 – 30Hz (range dependent)	
Range Resolution	8mm (range dependent)	
Interface		
Power Consumption	35W maximum (range dependent, head unit only)	
Supply Voltage	20 – 75V DC	
Communications Protocols	Ethernet (up to 80m) or VDSL (up to 1000m)	
Additional I/O	RS232, Isolated TTL in	
Connector Type	Impulse Titan	
VDSL cable length	Maximum length for VDSL and power is 300m, if power is provided locally (e.g., by the ROV), then cable length for VDSL communications is 1000m.	
Physical Specifications	Aluminium body	Titanium body
Weight in air	8kg	12kg
Weight in water	3.5kg	7.5kg
Depth rating	4000m	
Temperature Ranges	-10 to 35°C (operating), -20 to 50°C (storage)	

Specifications subject to change according to a policy of continual development.

Document: 0692-SOM-00001, Issue: 03