

# OCEANTOOLS

Innovative Products & Solutions for use in some of the world's harshest environments

## OceanTools SDO Standard Definition Overlay Multiple Channel Video Overlay



The industry standard OceanTools SDO (formerly known as the VO4W) multiple channel video overlay is the overlay of choice for the majority of ROV and survey companies with many hundreds of units delivered globally.

The SDO is a very powerful Windows based system that can superimpose a wide range of data onto up to 4 video inputs. Overlaid information can include:

- Time & date
- Your logo and your client's logo
- Serial data shown as text
- Serial data shown graphically
- 12 user-definable pages
- Text boxes
- Data-scales
- Data-dials
- Analogue and CP inputs
- Pipetracker input
- Sketch tools

The SDO is highly configurable and allows variable sized fonts and colours to be used. The unit is contained in a single 2U 19" rack-mount enclosure. The uncluttered design ensures that all video and data inputs and outputs are taken to the rear panel with the only connectors on the front being those of the mouse, keyboard and USB ports.

The Overlay is now available with a Pipetracker interface which allows for a 'heads-up' display of pertinent pipetracker information including depth of burial, altitude, lateral offset, historical data and search coil voltage.

### KEY FEATURES

Available with 1, 2, 3 or 4 video input channels

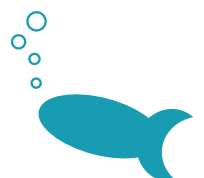
Auto-detection of PAL and NTSC inputs

Multiple serial inputs

Graphical representation of serial data

Optional CP & analogue inputs

Optional Pipetracker interface



# OCEANTOOLS

Innovative Products & Solutions for use in some of the world's harshest environments

## SPECIFICATIONS

Video input channels	1, 2, 3 or 4
Video formats	Auto-selection of PAL or NTSC
Composite input type	50 Ohm BNC
Composite output type	50 Ohm BNC
Enclosure	19" rack mount, 2U
Serial data inputs	3 x RS232
Serial input connectors	9 way D type male
Analogue input	4 channels at 12 bit resolution
CP input	Fully isolated
User definable pages	12
Voltage input	110 - 220VAC 50/60Hz

Input source:

Lateral Range  $\pm$   m Num Interval:  mm Tick Interval:  mm

Max Altitude:  m Num Interval:  mm Tick Interval:  mm

Max Burial:  m Num Interval:  sec Tick Interval:  sec

Trail History:  sec Update Rate:  Hz

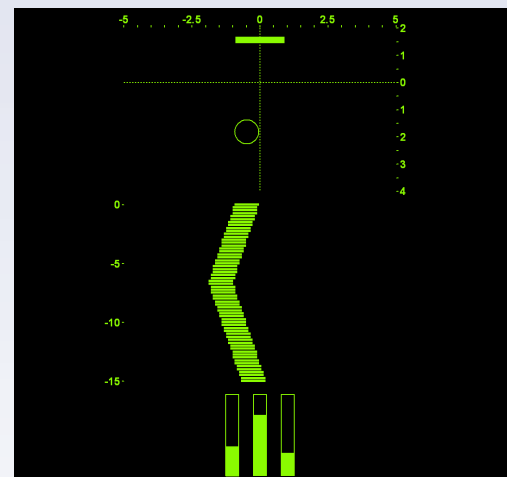
AaBbCc123 Font... Colour...

Pipe Diameter:  mm

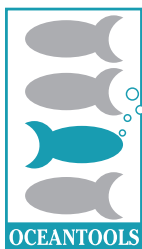
☐ Show Crosshairs

☐ Show Coil Voltages

OK Cancel



Pipetracker Interface



OceanTools Ltd  
OceanTools House  
Claymore Drive  
Aberdeen AB23 8GD. UK.

Tel + 44 1224 709606  
Fax + 44 1224 709616  
Email [sales@oceantools.eu](mailto:sales@oceantools.eu)  
Web [www.oceantools.eu](http://www.oceantools.eu)

Represented by: