

SeaKing SBP

Parametric Sub-Bottom Profiler



If you need to obtain a clear picture of what lies below the seabed, look no further than the SeaKing Parametric Sub-Bottom Profiler from Tritech. Sub-bottom profiling is now possible from this compact, low power, unit. Ideal for ROV and AUV use.

Part of the SeaKing range of sensors the Parametric Sub-bottom Profiler is easy to integrate into a sensor network using ARCNET or serial communication protocols. This allows all of the data from the suite of sensors to be displayed on one Surface Control Unit (SCU).

The display allows the operator to view the raw 200kHz seabed profile or choose to view the 20kHz sub-bottom layers produced by the parametric pulse or view both at the same time.

Innovative multi-element composite transducer array

The specially designed transducer enables the echosounder to emit very low frequencies whilst minimising the size of the overall unit. Producing a 20kHz pulse, the system is capable of penetrating the seabed and highlighting structural differences that are hidden from view to conventional echosounders.

Benefits

- Robust, proven, reliable design
- Easy integration with SeaKing sensors
- Penetrate sea-floor and silt

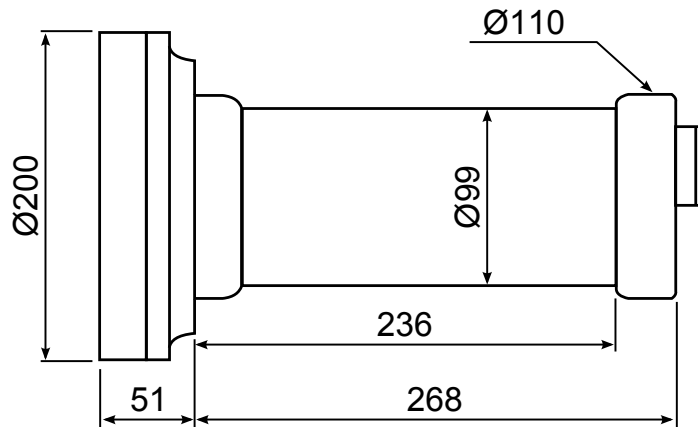
Features

- Dual frequency operation
- Compact design
- Energy efficient
- ARCNET or RS232
- 4000m depth rating

Applications

- Site survey
- Route survey
- Pipeline crossing
- Wreck search
- Object detection

Specification



Not to scale, dimensions in mm.

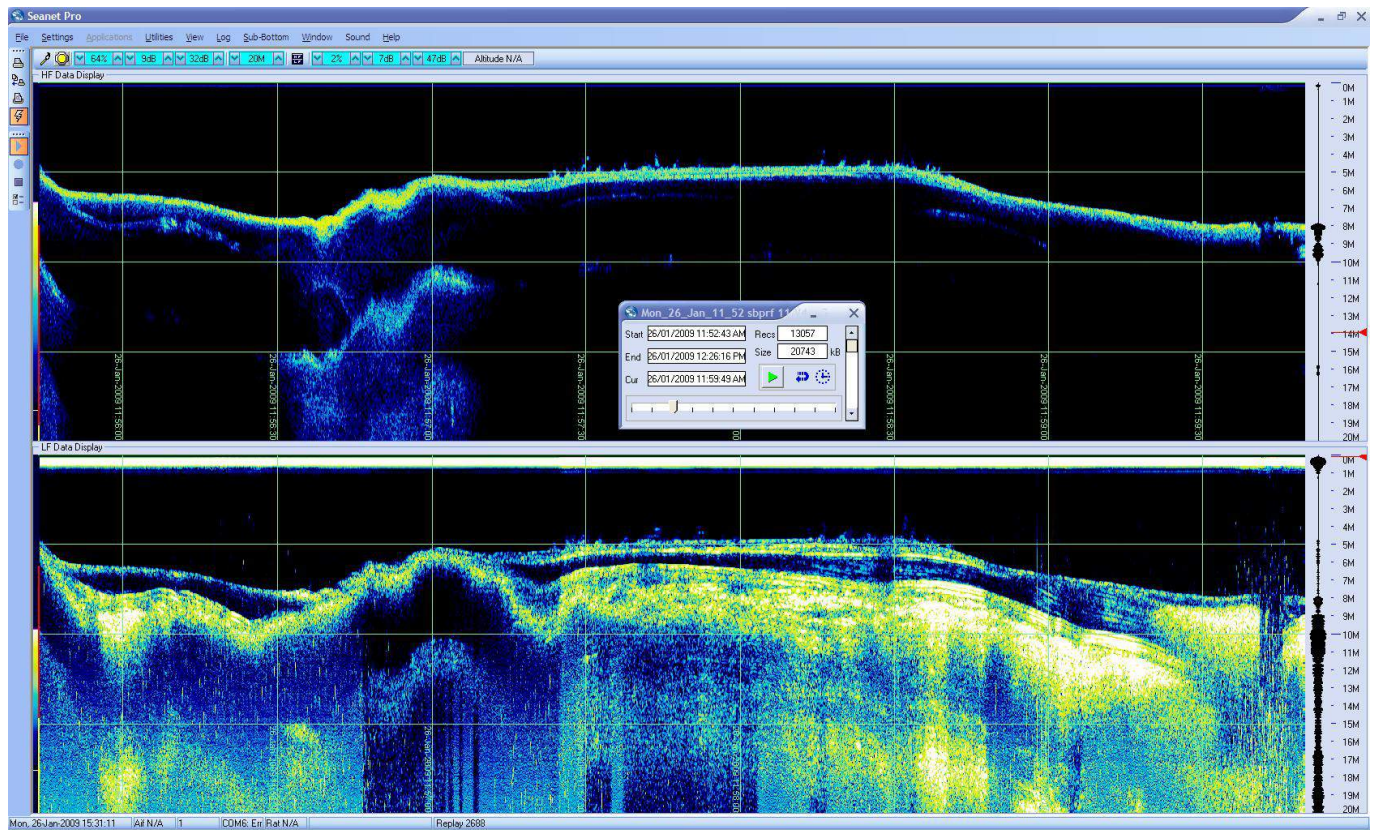
Acoustic	Low Frequency	High Frequency
Frequency	20kHz	200kHz
Beamwidth	4.5°	4°
Pulse length	100µs	

Physical	
Weights	Air: 6.3kg, Water: 2.7kg
Depth rating	4000m
Materials	Aluminium alloy (hard anodised)
Temperature	-10 to 35°C (storage: -20 to 50°C)

Electrical and Communication	
Power requirements	24V DC at 410mA
Communication protocols	ARCNET, RS232

Software
Tritech Seanet Pro or low-level direct command control

Sub-bottom profile of Lake Windermere (Cumbria, United Kingdom)



Specifications subject to change according to a policy of continual development.

Document: 0374-SOM-00008, Issue: 03